

WOVEN

Decking & Flooring



Spice



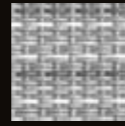
Bold Beige



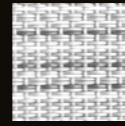
Reflection



Tranquility



Grey Stitch



White Stitch

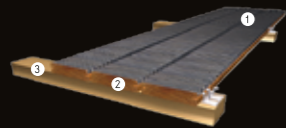


Ecru Hem

Solutions

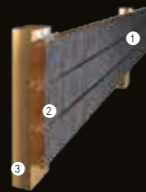
INDOOR OUTDOOR

DECKING



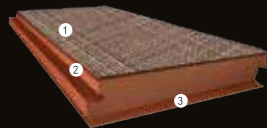
- Easy to install
 - 100% waterproof
 - Highly resistant to temperature changes
 - B-Fix Classic profile
1. Woven PVC
 2. Thermotreated pine plank
 3. Autoclave-treated pine support beam

DECKING WALL



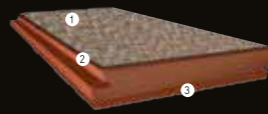
- Easy to install
 - 100% waterproof
 - Highly resistant to temperature changes
 - B-Fix Classic profile
1. Woven PVC
 2. Thermotreated pine plank
 3. Autoclave-treated pine support beam

HDF



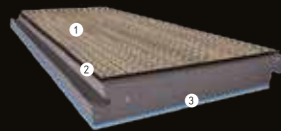
- Unilin Clic system
 - Good performance against water from the top
 - Base film required
 - 200 m² area without joints guaranteed
1. Woven Vinyl
 2. HDF 6,8 mm
 3. Cork 1,2 mm

HDF LIGHT



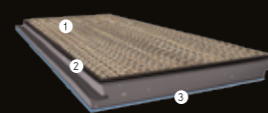
- Unilin Clic system
 - Good performance against water from the top
 - Base film required
 - 200 m² area without joints guaranteed
 - Possible to join clic with SplashH₂O light product
1. Woven Vinyl
 2. HDF 4 mm
 3. Cork 1,2 mm

SPLASH₂O



- Unilin Clic system
 - 100% waterproof
 - Base film not required
 - 400 m² area without joints guaranteed
 - Possible to join clic with HDF product
1. Woven Vinyl
 2. Rigid PVC 6,5 mm
 3. FlooverFlex 1,5 mm (Optional)*

SPLASH₂O LIGHT



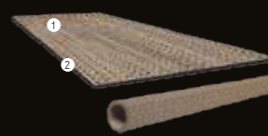
- Unilin Clic system
 - 100% waterproof
 - Soundproof layer optional
 - Base film not required
 - 200 m² area without joints guaranteed
1. Woven Vinyl
 2. Rigid PVC 4 mm
 3. FlooverFlex 1,5 mm (Optional)*

LOOSE LAY



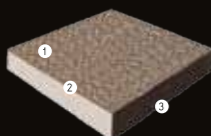
- Thin material for removable glue
 - Easy to install
 - Antistatic
 - Easy access to the subfloor
 - Easy to replace
1. Woven Vinyl
 2. PVC + FiberGlass 4,2 mm

GLUE DOWN



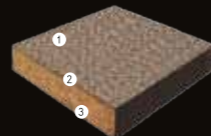
- Thin material for traditional gluedown
 - 100% waterproof
 - Format: Sheets, Roll or Tiles
 - Leveler is required
 - No dilatation gap/skirting required
 - Joints are not guaranteed
1. Woven Vinyl
 2. Backing Vinyl

RAISED HARDCORE



- No need prework for the subfloor
 - Warm and comfortable
 - 100% waterproof
 - Excellent noise reduction
 - Easy access to the subfloor
 - Easy to replace a single tile
1. Woven Vinyl
 2. Calcium Sulphate 30 mm
 3. Aluminum foil

RAISED SOFTCORE



- No need prework for the subfloor
 - Warm and comfortable
 - Excellent noise reduction
 - Easy access to the subfloor
 - Easy to replace a single tile
1. Woven Vinyl
 2. High density chipboard 38 mm
 3. Aluminum foil



Fire Resistant



Ecological



Abrasion Resistant



Chemical Resistant



B-Fix Classic profile



Silent



UV Ray Resistant



No Glue Installation System



Impact Resistant



Waterproof

